

1. Place your new HDD in M-Player Tray & connect.

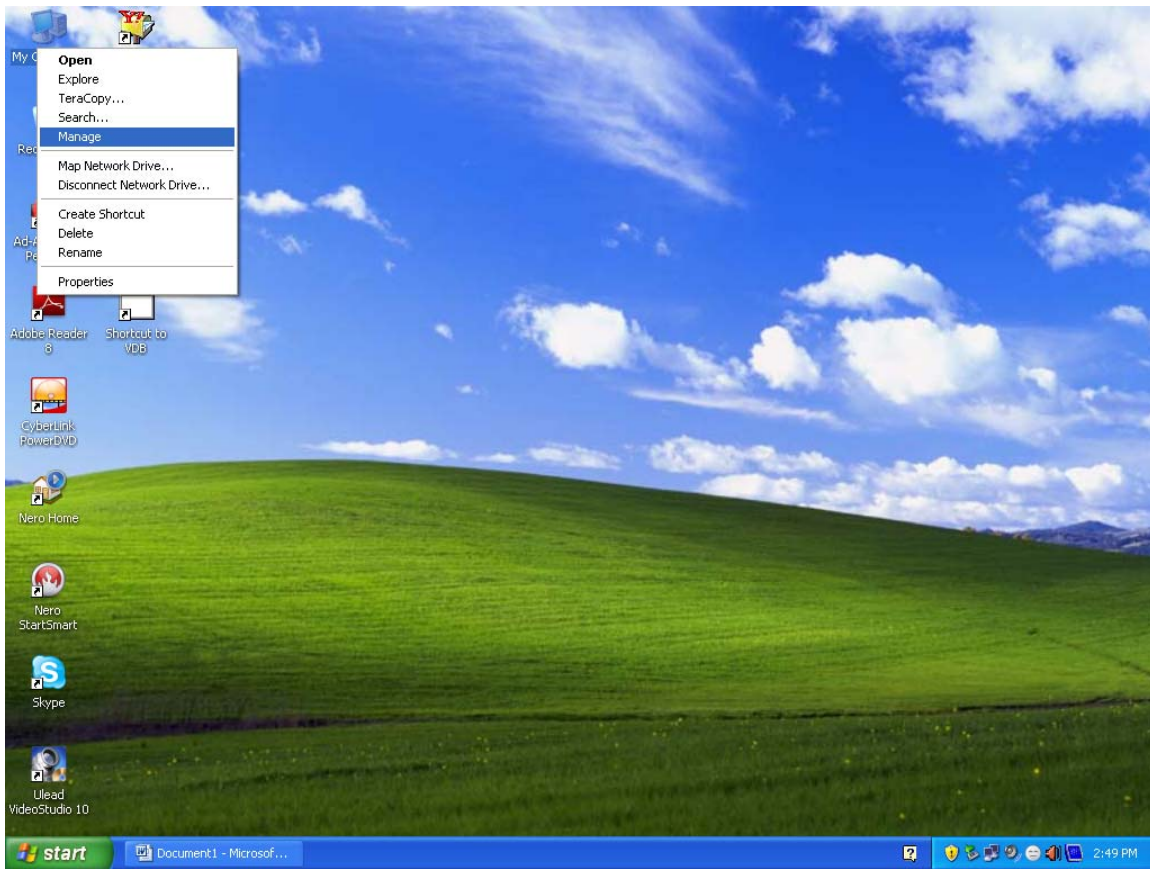




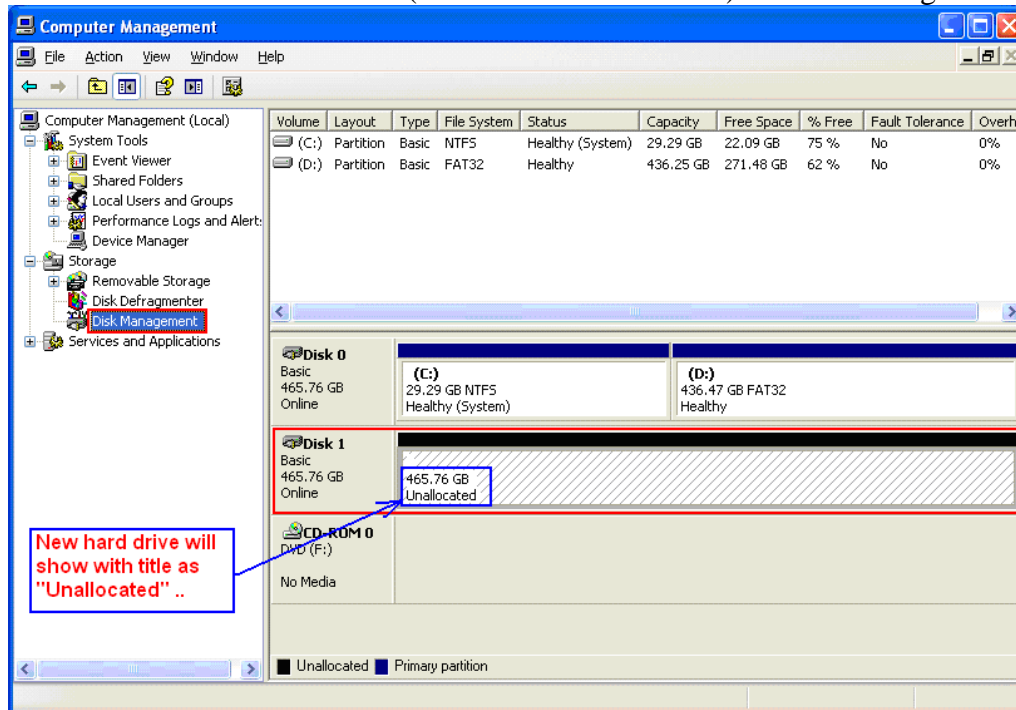
2. Connect your M-Player with computer by USB cable



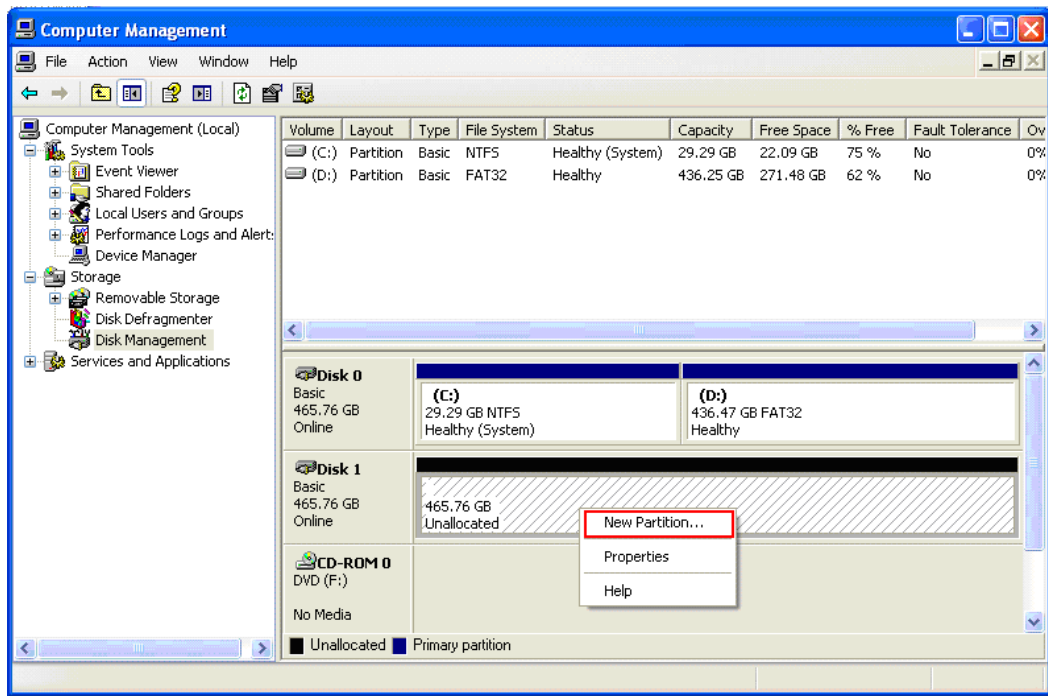
3. At “My Computer” icon -> click “Right Mouse’ to choose “Manage” tag --> Click !



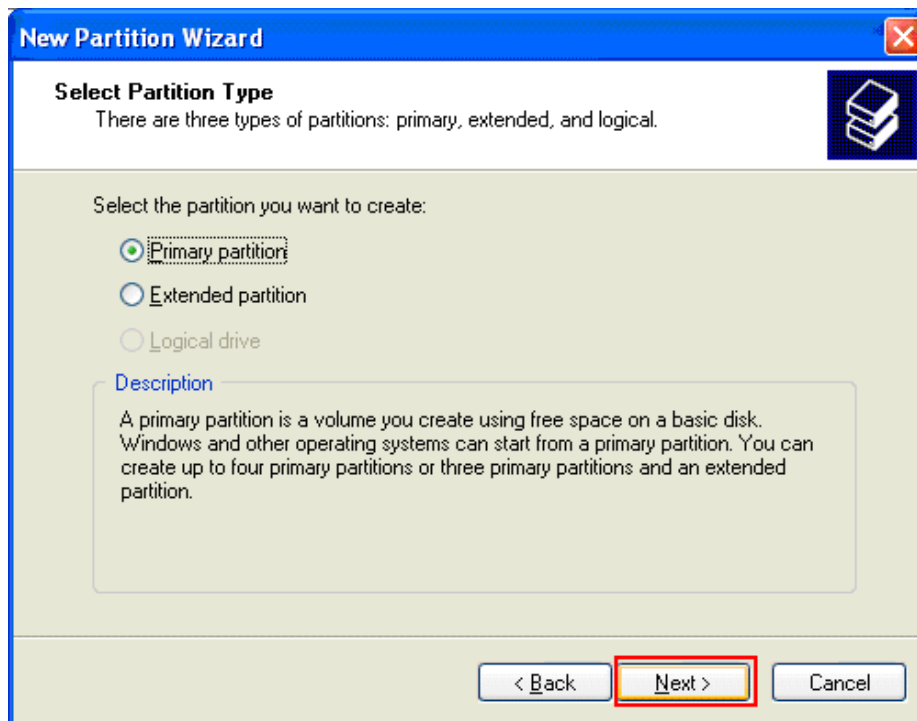
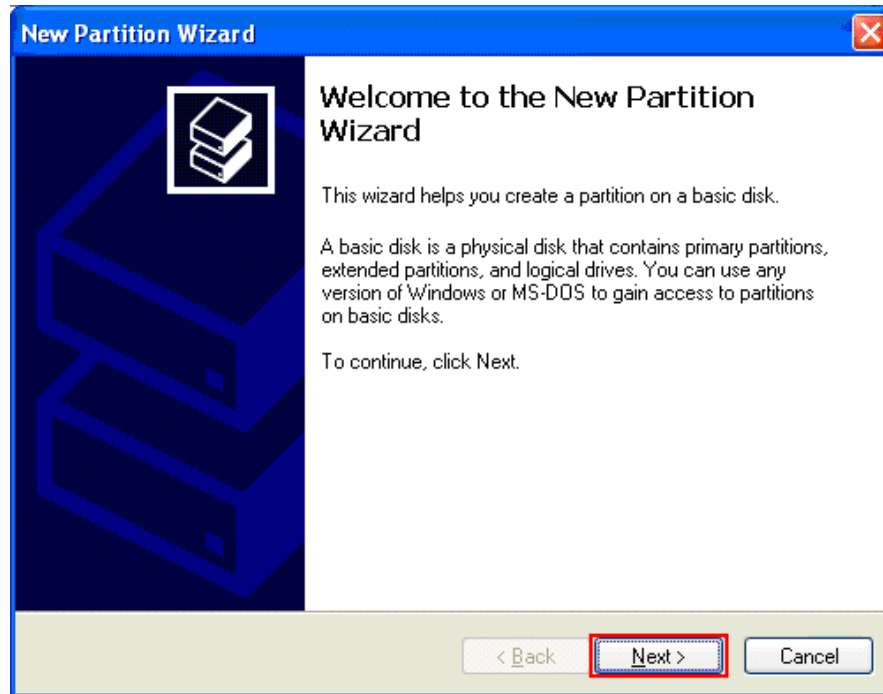
You can will be view below Panel or same (current at Windows XP ) --> choose tag “Disk Mangement”

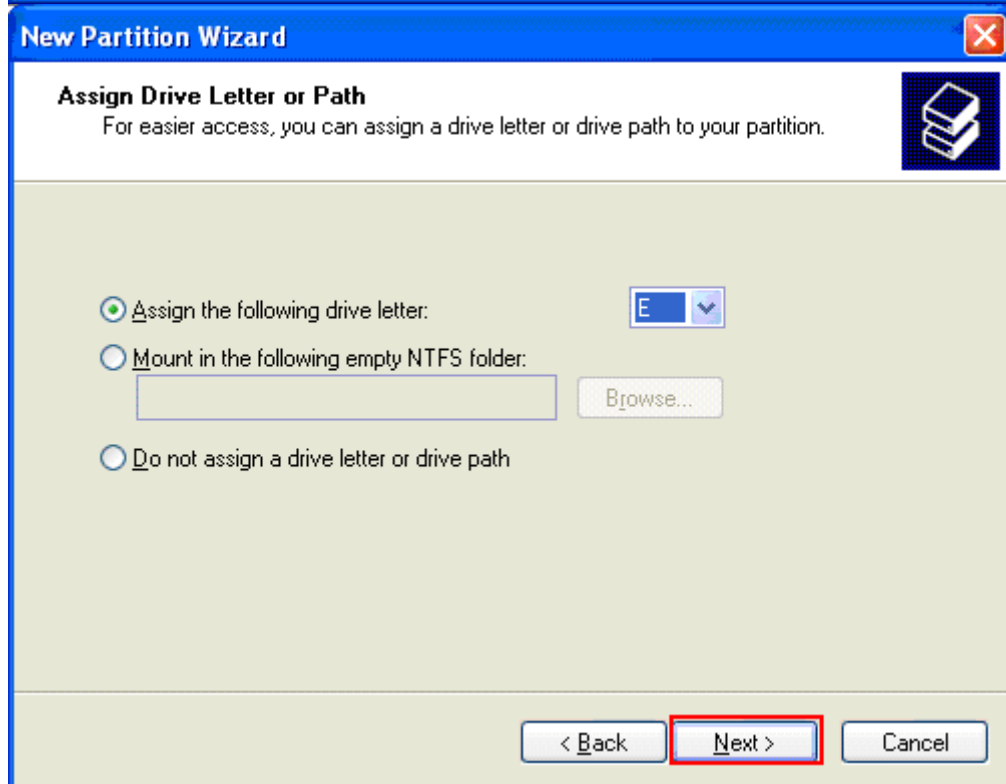
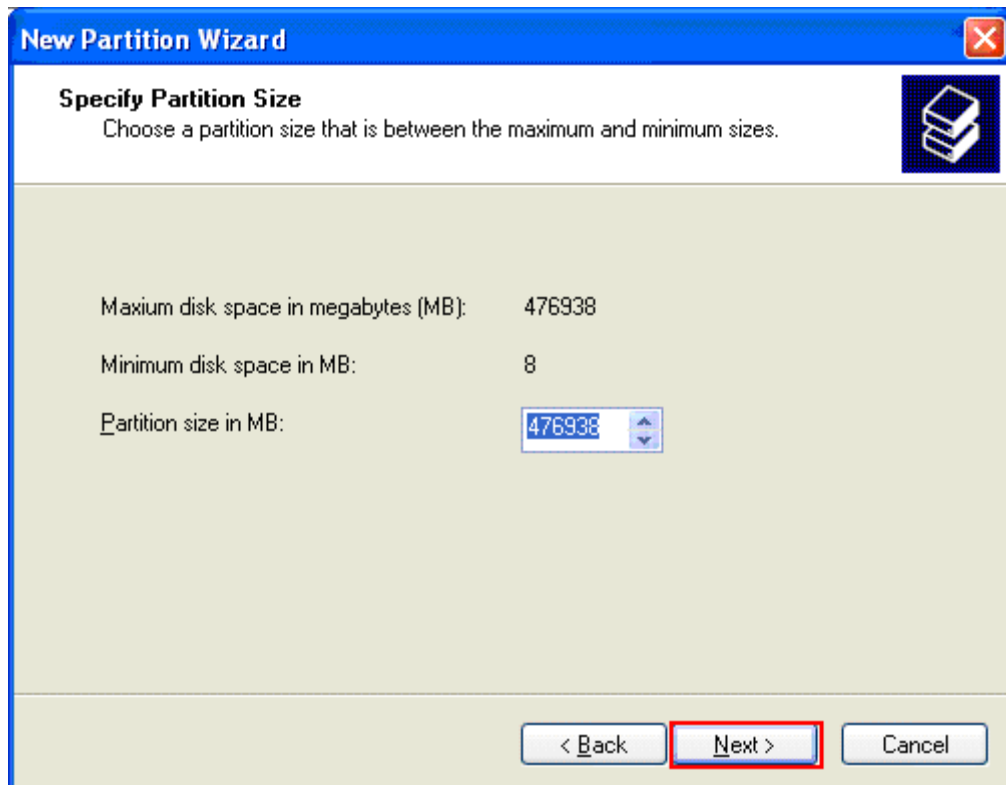


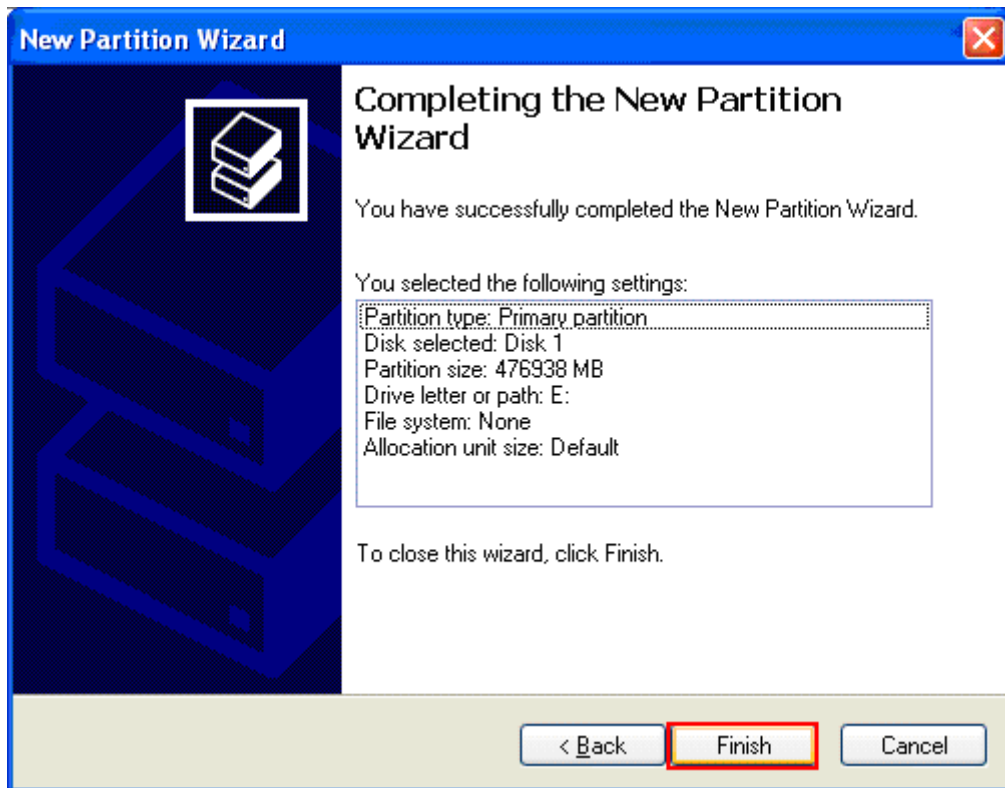
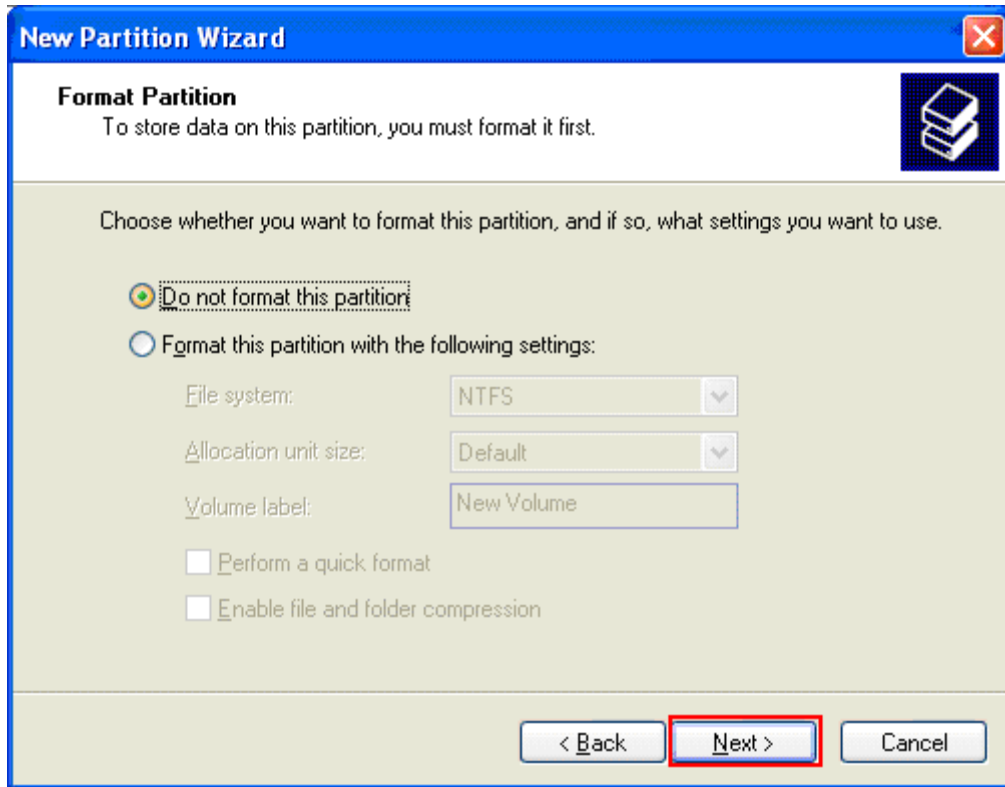
Then, you click “Right Mouse” at new harddrive & choose “New Partition...”



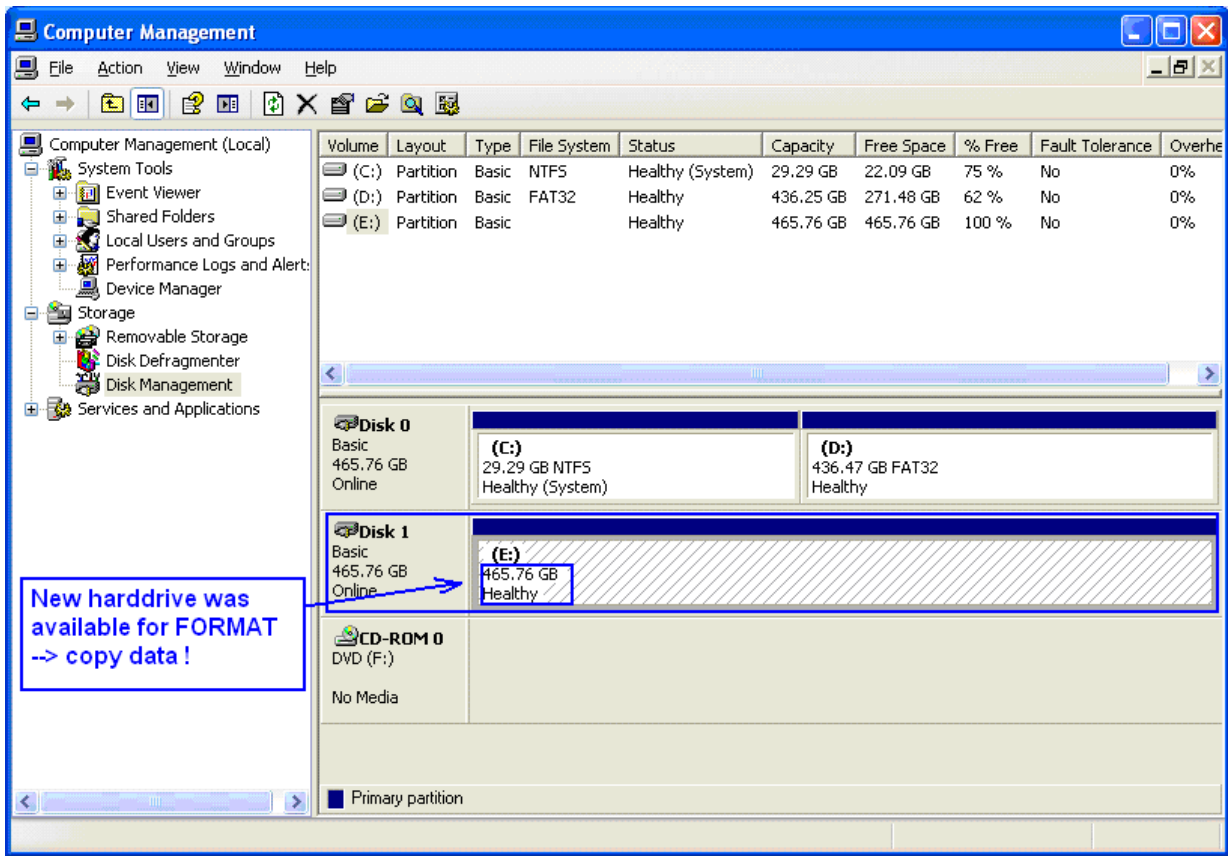
Then click to “Next”, “Next” ... to “Finish” on below pictures.





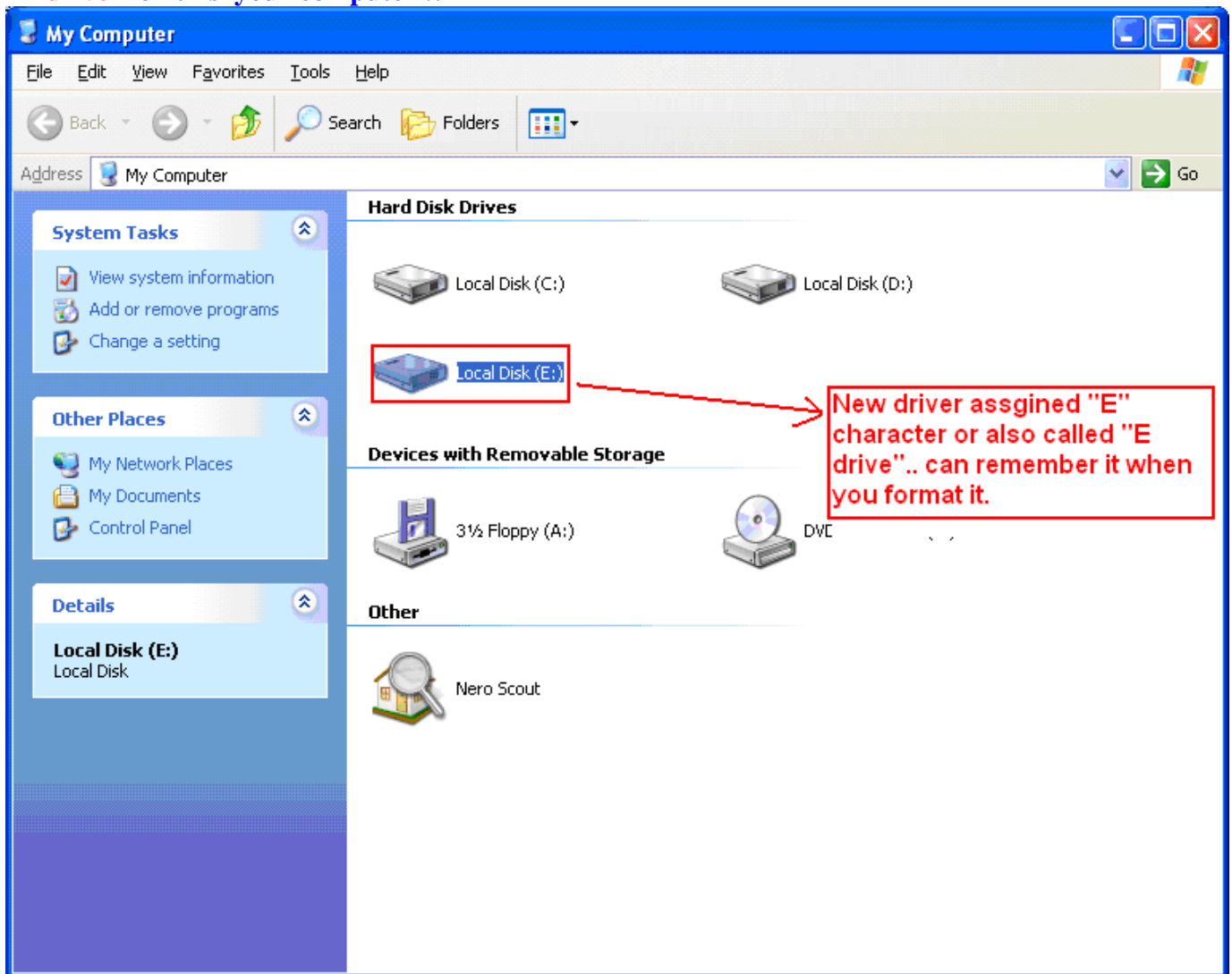


Click “[Finish](#)” to done “partition process” on new harddrive, can check it again in “[Disk Mangement](#)” before go to “**Format new harddrive process**”



**FORMAT new harddrive with FAT32 mode ( FAT32 only working on Karaoke M-Player machine)**

1. Check again label name & assign character of new hard drive, in this demo is “**E:**” – also called drive “**E drive**“ on this your computer !!

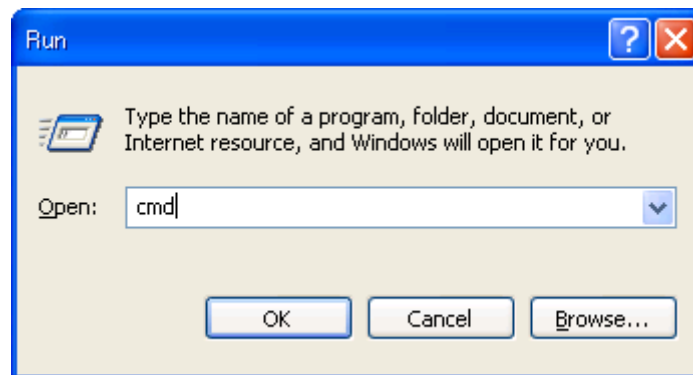
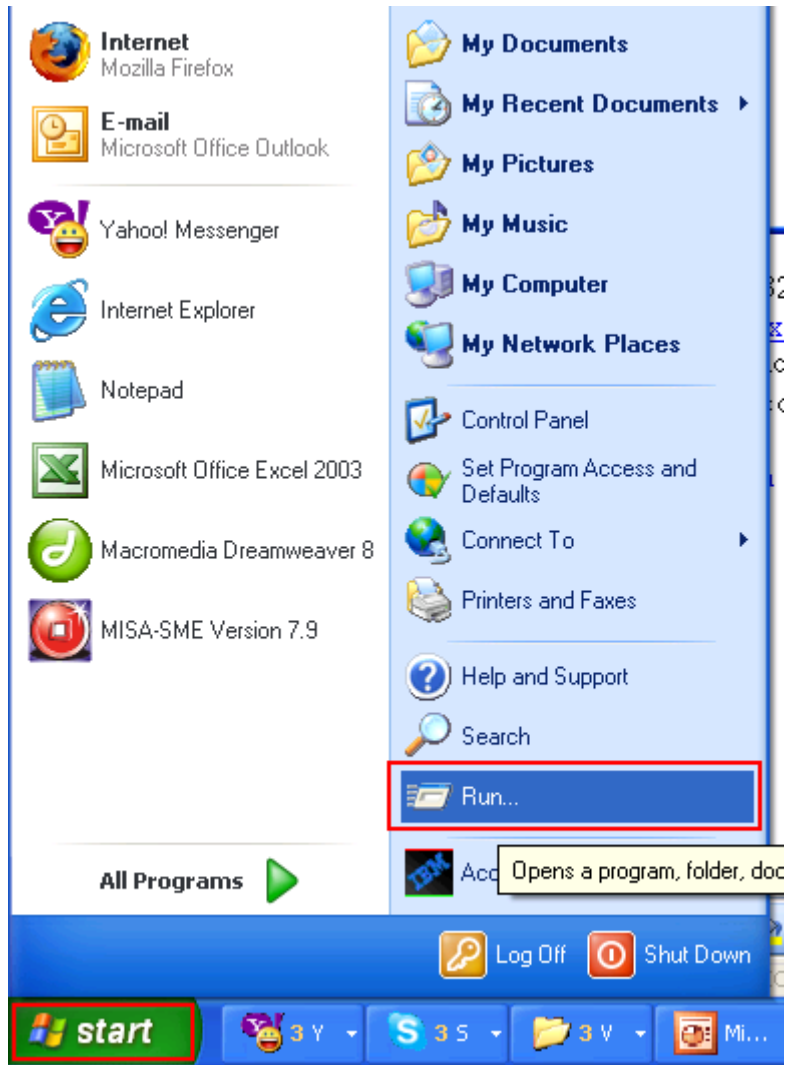


Now, we will format it to FAT32 by tools “fat32format.exe” , you can download it at here:  
<http://www.mediafire.com/file/xmh4kzji2a3/fat32format.exe>

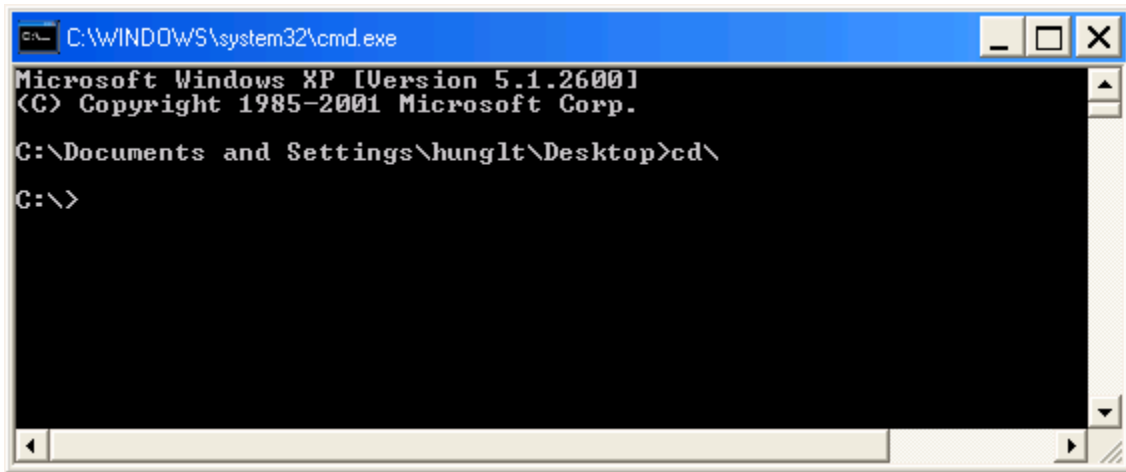
\*\*\*\*\* View more information : <http://www.vivsys.com/en/forum/showthread.php?t=4>

After download this tools, can copy or place it to “C:\” - “only easy to key command”

\*\* From “ Start Menu --> Run “ , then key in command: “cmd” -> Enter !



..then , key command “CD\” --> **ENTER** to move at root of **C: drive** .

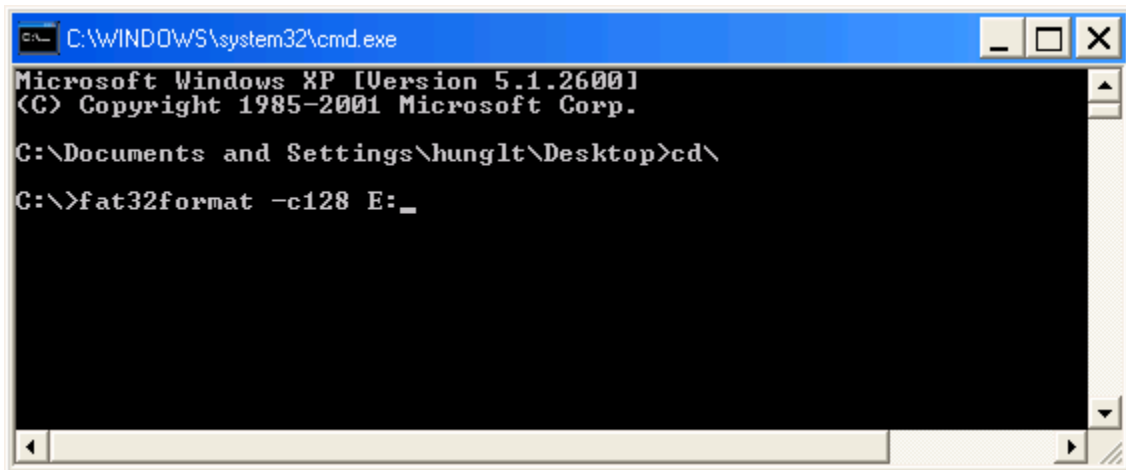


```
C:\WINDOWS\system32\cmd.exe
Microsoft Windows XP [Version 5.1.2600]
(C) Copyright 1985-2001 Microsoft Corp.

C:\Documents and Settings\hunglt\Desktop>cd\
C:\>
```

**OK, Now.. we will to start to FORMAT new drive to using with M-Player. !!!**

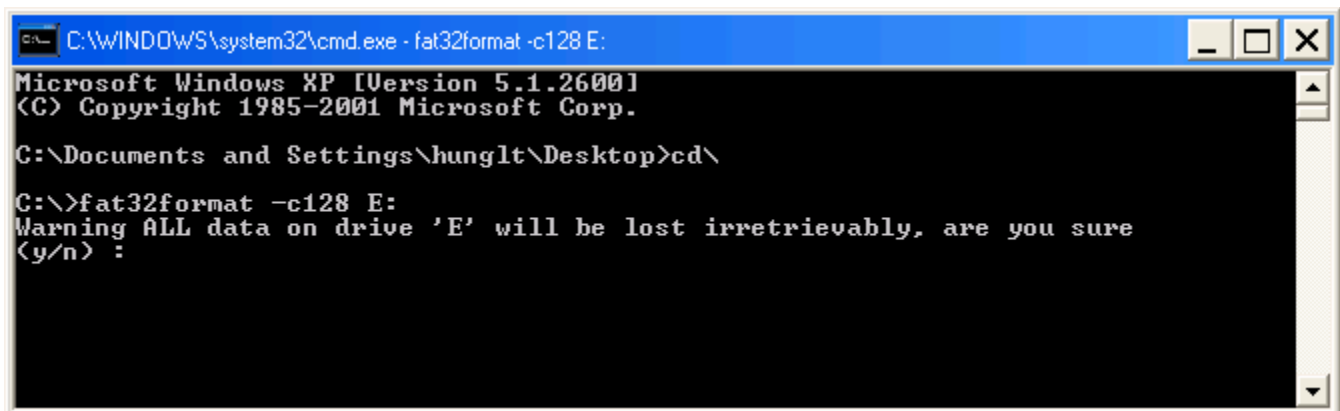
key this command with careful ..is: **“C:\fat32format -c128 E:“ ..see below !!!**



```
C:\WINDOWS\system32\cmd.exe
Microsoft Windows XP [Version 5.1.2600]
(C) Copyright 1985-2001 Microsoft Corp.

C:\Documents and Settings\hunglt\Desktop>cd\
C:\>fat32format -c128 E:_
```

**Choose ..”y” to start process a format driver ...!!**



```
C:\WINDOWS\system32\cmd.exe - fat32format -c128 E:
Microsoft Windows XP [Version 5.1.2600]
(C) Copyright 1985-2001 Microsoft Corp.

C:\Documents and Settings\hunglt\Desktop>cd\
C:\>fat32format -c128 E:
Warning ALL data on drive 'E' will be lost irretrievably, are you sure
(y/n) :
```

**Formatting your new hard drive ... Done !**

```
C:\WINDOWS\system32\cmd.exe
r sect)
Fat32Format -c2 X: - use 2 sectors per cluster < max size 274GB for 512 bytes p
er sect )
Fat32Format -c4 X: - use 4 sectors per cluster < max size 549GB ... >
Fat32Format -c8 X: - use 8 sectors per cluster < max size 1TB ... >
Fat32Format -c16 X: - use 16 sectors per cluster
Fat32Format -c32 X: - use 32 sectors per cluster
Fat32Format -c64 X: - use 64 sectors per cluster
Fat32Format -c128 X: - use 128 sectors per cluster <64K clusters>
Version 1.04, see http://www.ridgecrop.demon.co.uk/fat32format.htm
This software is covered by the GPL
Use with care - Ridgecrop are not liable for data lost using this tool

C:\>fat32format -c128 E:
Warning ALL data on drive 'E' will be lost irretrievably, are you sure
(y/n) :y
Size : 500GB 976768002 sectors
512 Bytes Per Sector, Cluster size 65536 bytes
Volume ID is 16df:2465
32 Reserved Sectors, 59610 Sectors per FAT, 2 fats
7630068 Total clusters
7630067 Free Clusters
Formatting drive E:...
Clearing out 119380 sectors for Reserved sectors, fats and root cluster...
Wrote 61122560 bytes in 51.6571 seconds, 1183237.489704 bytes/sec
Initialising reserved sectors and FATs...
Done
C:\>
```

**Now, you had a new drive to copy ,ready to plug-in Karaoke M-Player & enjoy it!!**

